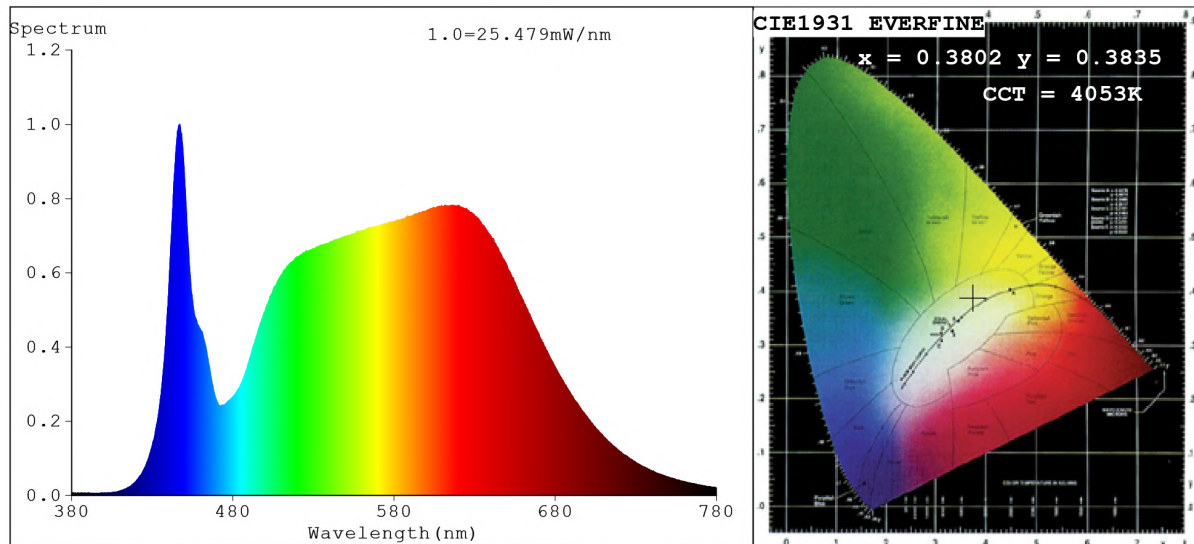


Spectrum Test Report



Color Parameters:

Chromaticity Coordinate: $x=0.3802$ $y=0.3835$ / $u'=0.2223$ $v'=0.5045$
 CCT=4053K (Duv=0.0032) Dominant WL:Ld =577.2nm Purity=29.2%
 Ratio:R=19.1% G=77.1% B=3.7%; Peak WL:Lp=447.1nm FWHM=16.3nm
 Render Index:Ra=90.9 CRI=87.0 TM30:Rf=91 Rg=99
 R1 =91 R2 =92 R3 =93 R4 =93 R5 =90 R6 =89 R7 =94
 R8 =85 R9 =58 R10=81 R11=93 R12=72 R13=91 R14=96 R15=88

Photo Parameters:

Flux = 1264 lm Eff. : 115.16 lm/W Fe = 4.170 W Scotopic:2221.8 S/P:1.7571

Electrical parameters:

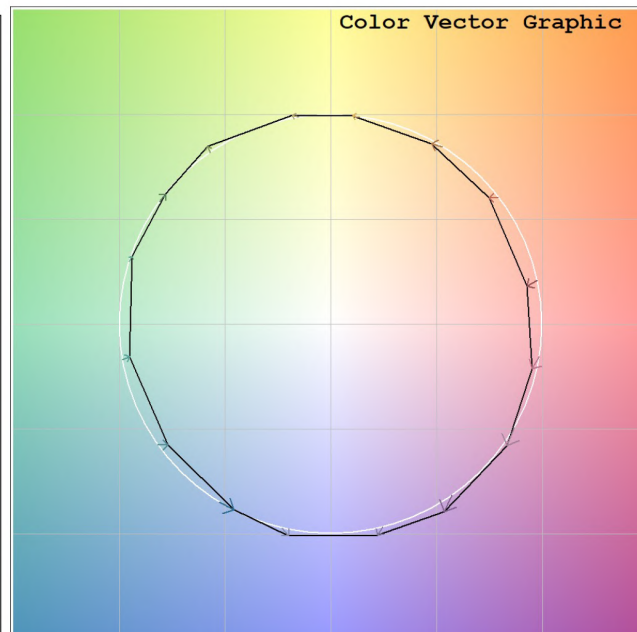
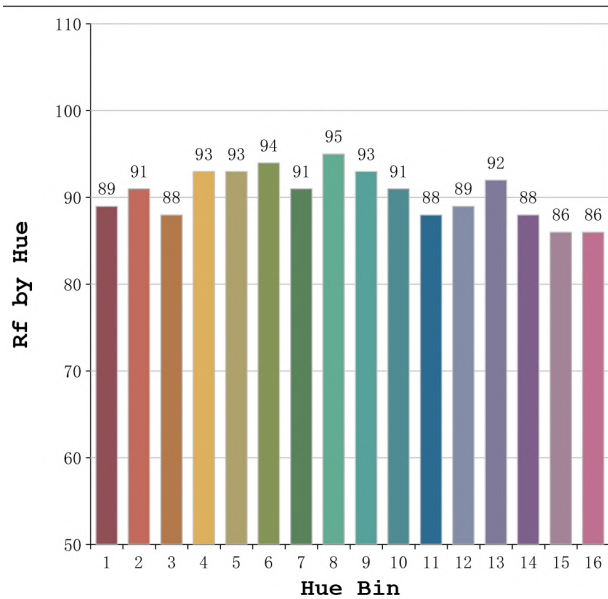
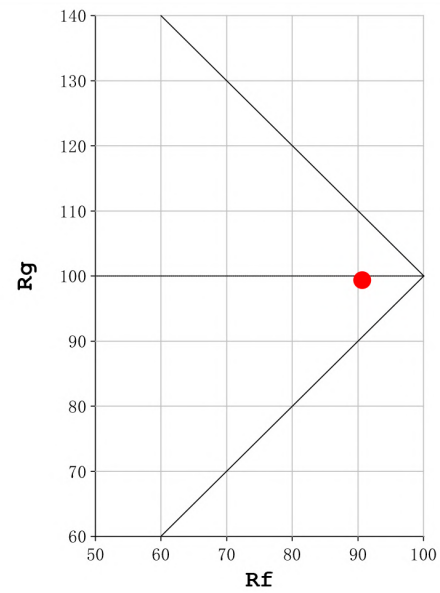
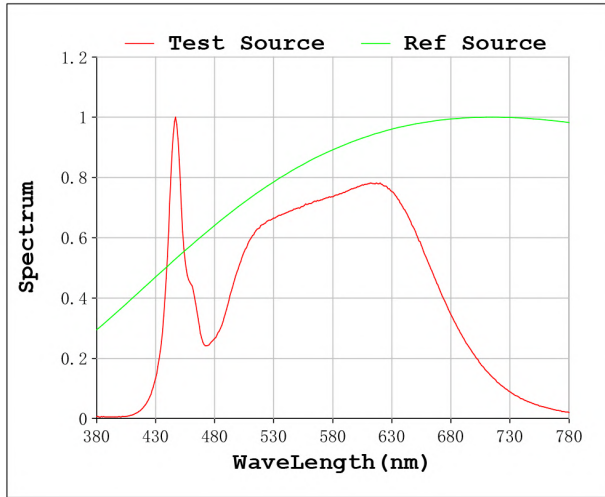
V = 11.998 V I = 0.9151 A P = 10.98 W PF = 1.000

Status: Integral T = 1099 ms Ip = 44321 (68%)

Model:Ecoled COB 8mm 4000K
 Tester:Sergio Carneros
 Temperature:27Deg
 Manufacturer:Luz Negra S.L

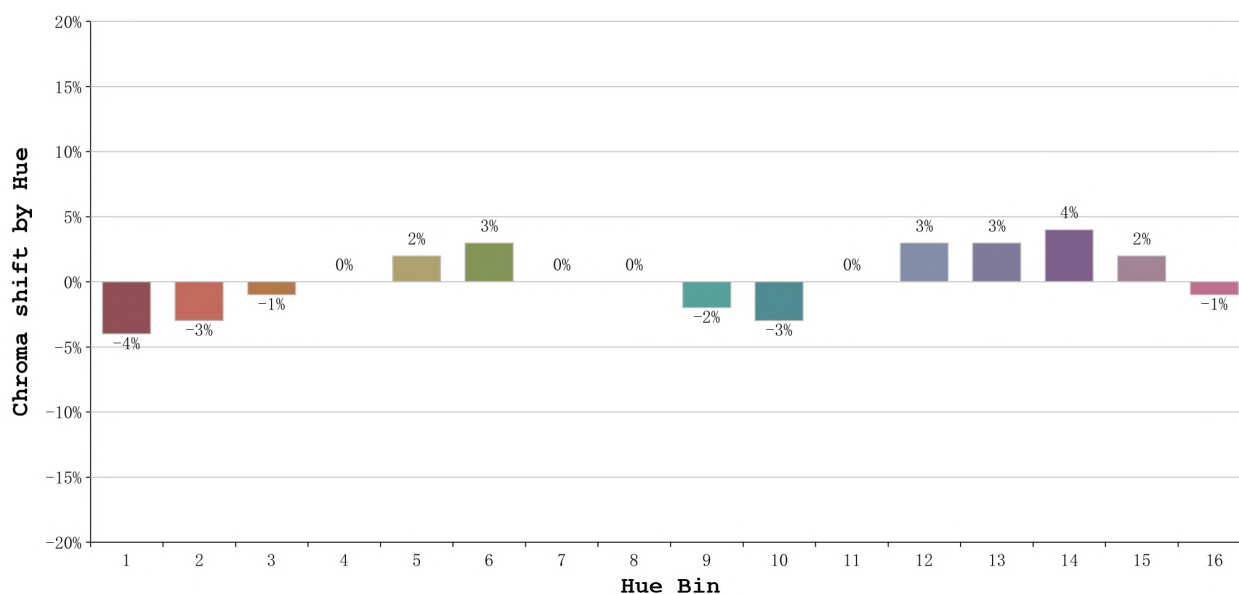
Number: 31.147
 Date:2024-01-15 14:59:06
 Humidity:40%
 Remarks:tira flexible de 100cm

Rf: 91 **CCT: 4053 K** **u': 0.2223**
Rg: 99 **Duv: 0.0032** **v': 0.5045**



Model:Ecoled COB 8mm 4000K
 Tester:Sergio Carneros
 Temperature:27Deg
 Manufacturer:Luz Negra S.L

Number: 31.147
 Date:2024-01-15 14:59:06
 Humidity:40%
 Remarks:tira flexible de 100cm



			Graphic shift(%)	
Hue Bin	Hue Angle	Rf	Chroma	Hue
1	0.0° - 22.5°	89	-4	-1
2	22.5° - 45.0°	91	-3	2
3	45.0° - 67.5°	88	-1	5
4	67.5° - 90.0°	93	0	3
5	90.0° - 112.5°	93	2	2
6	112.5° - 135.0°	94	3	0
7	135.0° - 157.5°	91	0	-4
8	157.5° - 180.0°	95	0	-2
9	180.0° - 202.5°	93	-2	0
10	202.5° - 225.0°	91	-3	3
11	225.0° - 247.5°	88	0	8
12	247.5° - 270.0°	89	3	4
13	270.0° - 292.5°	92	3	-2
14	292.5° - 315.0°	88	4	-6
15	315.0° - 337.5°	86	2	-8
16	337.5° - 360.0°	86	-1	-5

Model:Ecoled COB 8mm 4000K
 Tester:Sergio Carneros
 Temperature:27Deg
 Manufacturer:Luz Negra S.L

Number: 31.147
 Date:2024-01-15 14:59:06
 Humidity:40%
 Remarks:tira flexible de 100cm